

Historic, archived document

Do not assume content reflects current scientific knowledge, policies, or practices.

62.43

U. S. DEPARTMENT OF AGRICULTURE
★ MAY 18 1938 ★
U. S. Department of Agriculture

WIENER'S PLANT BOOK

For 1938

WIENER NURSERY
Sauk Centre, Minnesota

Sec. 562 P. L. & R.



FOR

U. S. DEPARTMENT OF AGRICULTURE,

WASHINGTON, D. C.

BUREAU OF PLANT INDUSTRY
Fruit and Vegetable Crops and Diseases

GPO 8-3591

U. S. N.



TO OUR FRIENDS AND PATRONS:

We especially thank all who made it possible for us to double our volume of business during the season of 1937. It goes to show that the right quality, price, and service, are the things our customers want. We shall endeavor to please all during the new season of 1938.

INFORMATION. Your planting problems and any information desired in any way will always receive our prompt attention. Please call on us. Landscaping plans drawn free if we are to furnish the stock. Send rough sketch of grounds to be planted. State type of architecture of your home, if any special type.

If there is anything not listed in this catalogue, or sizes wanted, write us. Sometimes we have it, although in too small a quantity to list all such items.

PARK BOARDS, schools, institutions, and everyone needing a large quantity of goods, please send us your want list for quotations.

TERMS: We do a cash business to keep down overhead. However, if you cannot send whole amount at once, send a reasonable deposit.

DISCOUNTS: Prices are net, with the exception of a 5% discount for full cash order sent before March 1st. More than the bank pays you on time deposits.

LOCATION. Nine miles southeasterly direction from Sauk Centre, on Old Getty homestead. Three miles from Highway 71, which is east of us. 15 miles north of Brooten. Three miles northeast of Padua.

In Stearns County, one of the best agricultural regions in the United States. At the top in dairying. Gateway to the Lake Region.

Yours very truly,
Ferdinand J. Wiener

WIENER NURSERY, Phone 1F-30, Sauk Centre, Minnesota

HARDY ORNAMENTAL SHRUBS

A well planted home sends out a perpetual smile every day in the year, to both your family and every passing stranger.

Quantity discounts: 3 or more of one variety priced at 60c or under: 5c each. 25 or more of one variety, 8c each. Priced over 60c and under 90c, 3 or more of 1 variety, 10c each; 25 or more at 15c each. Shrubs 90c and over, 3 or more of 1 variety 15c each. 25 or more at 20c.

ALPINE CURRANT—Glossy foliage, fine cut, and dense, small attractive bush, golden yellow flowers. Adapted for shady places, exceptionally fine hedge plant. 15-18 in. 35c ea.

ALMOND.—Double flowering. Handsome shrub, branches of which are literally covered in June with very double, rosy pink flowers. Popular. Can furnish either the pink or white, 3-4 ft size, 75c ea.

BARBERRY JAPANESE. Beautiful, valuable shrub, dwarf thick, stiff and thorny clean small foliage, highly attractive persistent red fruits. Thrives both in sun or shade. Quite an ideal hedge plant. 15-18 in. 35c ea. 18-24 in. 50c ea.

BARBERRY, RED LEAF. .. Similar to above plant with exception of rich bronzy red foliage. Plant in full sun to bring out its best color. 18-24 in. 50c each.

BUTTERFLY BUSH.—Sometimes called Summer Lilac. Choice shrub, rapid grower, lovely spikes of bloom produced nearly all summer, radiating delightful perfume. Plant is semi-herbaceous, and should be cut back to base each spring. Mulch of leaves at base of plant is advisable for winter protection. Isle de France variety, rosy-purple flowers suffused with violet. No. 1, 2 yr. plants. 50c each.

Order shrubs, etc. before April 1st., as we cannot promise to supply all varieties after that date.

CORALBERRY. Graceful shrub covered with red berries, hanging nearly all winter. Good in shade or anywheres. Good for mass planting, etc. 2-3 ft. 35 each.

COTONEASTER ACUTIFOLIA.—Dark green foliage, pinkish flowers, black fruits. Very hardy. Planted for their foliage, good on banks and ledges. Best in sunny location. 18-24 in. 50c.

CORNUS SIBERICA Siberian Dogwood. Invaluable for winter effect, choice shrub in summer stems, branches blood-red foliage dark green. White flowers followed by bluish-white berries, attracting birds. 2-3 ft. 50c.

CORNUS, STOLONIFERA—Native Red-Twig Dogwood. Similar to above. 3-4 ft. heavy plants 75c. Dogwoods prefer moist soil, and fertilizer helps to give color. Prune annually, cut old wood out from center and down to ground. Do not head them back at the top.

CARAGANA or PEA-TREE.—Attractive tall shrub, fine foliage, yellow pea-like flowers, followed by pods. Very good hedge plant, Thrives in exposed places. 2-3 ft. 35c.

ELDER, Golden.—One of the finest shrubs with its golden foliage, contrasting wonderfully with other shrubs. Masses of white flowers, followed by black berries. Best color in sun. 3-4 ft. 60c.

ELDER, CUT LEAF.—Deeply cut, dark green, fern-like foliage, drooping habit. Attractive. Prefers shade. 2-3 ft. 50c; 3-4 ft. 60c.

EUONYMUS ALATA. ...Winged or Cork-barked Euonymus. Stiff, upright shrub, branches with corky wings, flowers inconspicuous, foliage colors beautifully in fall, fruit pretty, something like bittersweet. 24-30 in. 65c.

FLOWERING PLUM. Rose Tree of China. You cannot pass it without a breath-taking exclamation at its beauty. Covered with double rose-like flowers and blooms first year after planting. 3-4 ft. 60c.

MINNESOTA RED LEAVED PLUM. A new beautiful variety, everyone should try. Don't miss this. 3-4 ft. 70c.

FLOWERING CRAB.—Hopa Crad. This aristocratic tree is of rare beauty and valued very highly by all who possess it. Wood is red, inner bark is red, and the flowers appearing in immense clusters all over the tree, are of a bright reddish color, followed by little apples which are red from the time they appear. Matured fruit is red to the core and edible. 4-5 ft., 85c. 3-4 ft., 75c.

RED SILVER CRAB.—A new variety from the Minnesota University, red twigs, reddish leaves underlined with silver, red flowers, and red fruit. A beauty and one of our heaviest sellers. 3-4 ft. \$1.00. 2-3 ft. 60c.

BECHTEL CRAB.—An elegant variety with delicate pink, large perfectly double flowers. An old favorite. 3-4 ft. 80c; 2-3 ft., 60c.

FLAME FLOWERING CRAB.—Another late variety from the Minnesota University. A very beautiful tree, all its name implies. Try this also. 5-6 ft., \$1.25; 4-5 ft., \$1.00; 3-4 ft. 75c. Order all crabs early as they sell quickly.

HONEYSUCKLE or LONICERA.—One of the most popular shrubs, and deservedly so. Good both in sun or shade, does not fear drought. Foliage glossy, green coming very early in spring. The fragrance when in bloom fills the air for long distances. All honeysuckles are fine hedge plants. We sell four varieties, as follows:

PINK TARTARIAN.—3-4 ft., 50c; 2-3 ft., 40c; 18-24 in., 30c

RED TARTARIAN—3-4 ft. 60c; 2-3 ft. 45c.

WHITE HONEYSUCKLE: Same prices and sizes as the Pink.

MORROWII HONEYSUCKLE. A more dense growing sort, not quite so tall, flowers white changing to yellow, red berries. Especially good for hedges. A hardy and lusty grower. Same prices as the pink.

HYDRANGEA (Paniculata grandiflora).—One of the most popular shrubs. Immense heads of bloom in August and September, white, changing to pink and bronze with age. 20-30 in., 60c.

HYDRANGEA, ARBORESCENS.— (Hills of Snow) Magnificent variety. Very large blooms snow-white, during July to September. Does somewhat better with a little shade. 24-30 in., 60c.

HIGHBUSH CRANBERRY. This makes a very pretty shrub in fact, many prefer it to the old fashioned Snowball. More of them are sold every year. The red berries will remain until late in winter. 2-3 ft., 50c.

FRENCH LILAC.—Everyone should plant at least one of these. They are so much better than the common lilac. The blooms are much longer and larger, more beautiful in every way. Varieties we can furnish are: Pres. Grevy, double blue. Mme. Lemoine, double white. Belle de Nancy, double rose, white center. Guizot, double, deep dark purple.

CONGO, SINGLE, VERY DARK RED.—Charles X. Single reddish purple.

RUBRA DE MARLAY.—Double rosy red. Prices on all French Lilacs are: 2-3 ft. 75c; 3-4 ft., \$1.00; 4-5 ft., \$1.50.

CHINESE LILAC.—A Chinese shrub that is becoming better known. Looks much like the common lilac, but grows more freely. Blossoms after general lilac season is over. Flowers are attractive, but without fragrance. Worth planting. 2-3 ft. 65c; 3-4 ft. 70c; 4-5 ft., \$1.00.

PERSIAN LILAC.—This does not grow as large as other lilacs, has slenderer twigs and altho the flowers are smaller, they are borne in close clusters, delightfully fragrant with true lilac odor. Rich lilac-purple color. A favorite with all who know lilacs. Don't miss this. 3-4 ft., \$1.00; 2-3 ft., 65c; 18-24 inches, 45c.

OLIVE, RUSSIAN.—Strong shrub, 10-12 ft. Stiff branches and spiny, silvery white foliage, effective in mixed plantings. Small yellow flowers, fragrant. Very hardy 2-3 ft. 50c, 3-4 ft., 65c.

POTENTILLA FRUCTICOSA.—Shrubby Cinquefoil. Dense shrub, 3-4 ft., stiff, upright stems, small yellow blossoms borne all summer. Very hardy and self-sufficient, thrives in either wet or dry lands. Useful for places where no further care can be given. 18-24 in. 35c.

MOCKORANGE. (Philadelphus). Virginal variety, a double Mockorange is becoming a very popular shrub throughout the world. Compact growth, flowers very large, fragrant, fully double, and semi-double. Blooms over a long period. Height, 5-7 ft. Prices, 3-4 ft., 70c; 2-3 ft., 50c. Lemoine's Mockorange, variety erectus. 4-5 ft. Erect, slender stemmed, fine leaved sort. Fragrant, creamy-white flowers. Heavy 2-2½ ft. 60c.

PHYSOCARPUS NANA DWARF NINEBARK. This is a coming shrub, 3 ft. high. form, dense grower, with very attractive foliage, flowers May-June, followed by numerous small red pods. This is a valuable, hardy, low-growing shrub. Makes a mighty fine hedge. Be one of the first to use this. The Minnesota Horticulturist in a late article highly recommended this. 2-3 ft., 50c; 18-24 in., 40c.

SPIREA VAN HOUETE. Everybody knows this, known as Bridal wreath. 3-4 ft., 35c; 2-3 ft., 25c; 10-15 inch plants for starting hedges, \$4.00 per 100.

SPIREA BILLARDI 5-6 ft. Choice spirea, differs from Van Houttei and others of that class. Profuse bloomer of long spikes of deep rose colored flowers, blooms nearly all summer. 3-4 ft. 50c.

SPIREA SNOWGARLAND. (*arguta*). 4-5 ft. Very graceful shrub with masses of snow-white flowers that come before those of the Bridalwreath. Plant this, and have Spirea in bloom before your neighbors. 2-3 ft. 45c.

SPIREA SORBIFOLIA. Ash-leaved Spirea. Rather a tropical looking shrub with leaves 8-12 inches long. Height 4-6 ft. White flowers in mid-summer, stiff, erect racemes 6-12 inches long. 3-4 ft. 60c, 2-3 ft. 50c

SPIREA FROBELLII. Dwarf, pink blooming sort, 18-24 inches, very pretty, and hardier than the Anthony Waterer sort. 18-24 in. 35c.

TAMARIX. 6-8 ft. The feathery, light, asparagus-like foliage makes this one of the most desirable shrubs. Give severe pruning each spring to secure the finest feathery effect. Bluish foliage, fleshy-white misty flowers in June. Try one. 2-3 ft. 35c.

MAY DAY TREE. 8-10 ft. European Bird Cherry. This is an exceedingly beautiful tree in spring when in bloom, simply covered with flowers, followed later by cherry-like fruit, a great attraction to the birds. If you wish to draw the birds about your place, include this tree. Grow in bush-like form. 4-5 ft. 85c.

FORSYTHIA. Golden Bell. Earliest of the spring flowering shrubs, masses of yellow flowers appearing before the leaves. Upright habit, 5-7 ft. 2-3 ft. 40c.

ROSA RUBRIFOLIA. Red leaved Rose. A most satisfactory shrub for contrast with its reddish purple leaves. Single flowers, pink, borne in June. Plant this amongst other shrubs and note the contrast. Nice plants, 50c.

ORNAMENTAL TREES

CHINESE POPLAR. Growth similar to the Lombardy Poplar, slightly more spreading, with different shaped leaves, beautiful bark. Some prefer this to the Lombardy, and it will be planted widely when it becomes better known. Highly recommended. We have a limited quantity of heavy 6-8 ft. trees at \$1.75.

LOMBARDY POPLAR. One of our best selling trees. It's towering spire gives it an individuality of its own. Always makes a striking feature in any landscape, and in great demand for planting in groups and boundary lines or for tall screen hedges. Grows rapidly and succeeds almost anywhere. 5-6 ft. 60c. 6-8 ft. 75c. 8-10 ft. \$1.00.

WEEPING WILLOW. Most people want a weeping willow in their yard. We can furnish in the following sizes and prices: 4-5 ft. 60c. 5-6 ft. 75c. 6-8 ft. \$1.00. 8-10 ft. \$1.75.

CUTLEAF WEEPING BIRCH. Undoubtedly one of the most beautiful and most popular of the weeping trees. Its tall, slender growth with its graceful, drooping branches, silvery white bark and delicately cut foliage makes it an object of beauty. 5-6 ft. \$2.00. 6-8 ft. \$2.75. 8-10 ft. \$3.50.

CATALPA, western. Highly desirable tropical appearing tree with immense panicles of creamy-white flowers in July, followed by long, bean-like pods. Grows rapidly, even in poor sandy soil. Leaves very large and heart-shaped. Flowers fragrant. Plant at least one Catalpa. 5-6 ft. 50c. 4-5 ft. 40c. 3-4 ft. 35c.

SCHWEDLER MAPLE. Bloodleaf Maple. One of the richest appearing trees grown, especially in spring when the gleaming red and purple leaves contrast brightly with the delicate green of other trees. Perfectly hardy. 6-8 ft. \$2.25.

CORK SCREW WILLOW. Here's something new and different! We are perhaps one of the first, if not the first nurserymen in the state to offer this to the public. The name is all it implies; the twigs and branches are bent in different directions every few inches, making it an oddity. Golden bark. Brought from Russia, it is rare and new here, so get one, it may be a long time before anyone else will have one just like it. Nice, strong young plants, 50c.

BOLLEANA POPLAR. (Silver Poplar.) Very effective column-like tree with silver-gray foliage. Growth rapid, and worthy of extensive planting. Having a heavy call for these lately. 5-6 ft. \$1.00. 6-8 ft. \$1.50. 8-10 ft. \$2.00.

HONEY LOCUST. This is a beautiful, rapid growing tree, fern-like foliage, with fragrant flowers. The wood is hard and serviceable. We are selling increased quantities of this tree, and can recommend them most anywhere. Hardy and drought resistant. Bears long bean-like seed pods after the flowers. Makes a rapid shade tree. 4-5 ft. 50c. 5-6 ft. 60c. 6-7 ft. 75c. Thornless Honey Locust seedlings, 18-24 in 10 for 50c, 100, \$2.00.

RUSSIAN OLIVE. This makes a pretty small tree, 10-15 ft. if cared for properly, its silvery foliage stands out amongst other trees. See also under shrubs. 3-4 ft. 65c. For other ornamental small trees, see Flowering Crab, May Day Tree, flowering Plum, under shrubs.

SHADE TREES

AMERICAN ELM. Perhaps there is no other shade tree that is more planted and better loved than the American elm. It grows into majestic tree, stands adverse conditions, and free from insects and disease. 6-8 ft. 75c. 8-10 ft. \$1.00. 1½-2 inch caliper, \$1.50.

Quantity prices on all ornamental and shade trees as follows: Trees under \$1.50, 3 or more of a kind 10c each. 25 or more of a variety, 20c. \$1.50 and over, 3 of a variety 15c ea. 25 or more 30c. \$2.50 or over, 3 of a variety or more 25c. All trees unless stated otherwise.

CHINESE ELM. This tree is now so wellknown, and met with almost anywheres, that further description is almost unnecessary. Prices 3-4 ft. 35c, 4-5 ft. 50c, 5-6 ft. 60c, 6-8 ft. 80c, 8-10 ft. \$1.50, 10-12 ft. \$1.75, 1½-2 in. caliper, \$2, 2-3 in. \$2.50. Discount on Chinese Elm is 5c ea. on all trees up to 80c ea. if taken in lots of 5 or more of one size. 10 to 25 trees 10c discount each of one size. On the larger sizes usual tree discount applies. If needed in large quantities, write us for the prices before ordering elsewhere.

LAKE CITY ELM. This is a bud selection of the American Elm, originating at Lake City, Minn. It is a beautiful compact type, and appears to be more drought resistant, withstands aphid better, does not sunscald, very hardy, rapidity of growth equals that of the Moline Elm. Shape resembles somewhat the Hard Maple, and particularly adapted to boulevard and Cemetery planting. We have a limited quantity of 4-5 ft. whips \$1.00 each, 5 for \$4.00. If interested in larger sizes and quantities, write us.

ASH, GREEN. This is another worthwhile shade tree that thrives under difficult conditions and grows rapidly. 4-5 ft. 50c, 5-6 ft. 65c, 6-8 ft. 85c. Prices on larger sizes on request.

MOUNTAIN ASH. Everybody likes the pretty Mountain Ash, with its ornamental foliage and red berries. 4-5 ft. 80c, 5-6 ft. \$1.00.

CATALPA speciosa. See under ornamental trees. We can furnish these in large quantities at very attractive prices; 5-6 ft. per 100 \$33.00, 4-5 ft. per 100 \$27.50. 3-4 ft. \$22.00 per 100. 50 at 100 rates.

AMERICAN LINDEN. Basswood. Really a beautiful tree with its perfect rounded form and dense foliage of large leaves, hardy, grows fairly rapid. Heavy trees, 5-6 ft. \$1.00.

CAROLINA POPLAR. The most rapid growing shade tree on our list, making a growth as much as 6 ft. or more in a year. This is especially valuable at tourist camps or any situation wanting quick shade. Large, dark green, glossy foliage. 4-5 ft. 40c, 10-\$3.00, 6-8 ft. 50c, 10-\$4.00. 8-10 ft. 75c. 10 for \$5.50. If wanted in larger quantities, be sure to write us.

MAPLE, SILVER or soft. Very rapid growing, perfectly hardy, bright green leaves, silvery under surface. Succeeds in almost any soil, even in damp soil where Norway Maple will not. 4-5 ft. 50c, 10-\$4.00, 5-6 ft. 60c, 10-\$5.50, 8-10 ft. 90c, 10-\$8.00, 1¼-1½ in. cal. \$1.50, 10-\$12.00, 1½-2 in. \$1.75. 10-\$15.00. 2-2½ in. cal. \$2.50. 10-\$23.00. Write for prices in larger quantities.

HACKBERRY. Hardy rapid growing making a beautiful, shapely tree, especially if given plenty of room, which should be considered when planting. Heavy winds do not break it, drought resistant to a high degree. 6-8 ft. (1-1½ inch cal.) \$1.50 10-\$13.50. 8-10 ft. \$1.75, 10-\$15.50. 10-12 ft. \$2.00. 10-\$18.00. 12-14 ft. \$2.75. 10-\$25.00.

FRUITS AND BERRIES

There's nothing like raising your own fruit. Most folks do not eat enough fruit in their daily diet. Plant some of our trees and with reasonable care you will be rewarded. We offer the standard and the newer varieties, those that are best to plant in the North. Remember these are Minnesota trees that will stand up under our conditions. Southern trees are cheaper, but not as long lived. Prices unless stated otherwise are as follows:

11/16 nice	5-6 ft. ea.	\$1.00	6-\$5.50	10-\$7.50	25-\$15.00
9/16	4-5 ft. ea.	.75	6-\$4.20	10-\$6.75	25-\$14.00
7/16	3-4 ft. ea.	.65	6-\$3.60	10-\$5.75	25-\$13.50

We cannot guarantee to fill order for all varieties in all sizes later on in the season, so order early otherwise you will not get certain varieties. If your favorite variety is not listed, let us know.

SUMMER APPLES. Duchess of Oldenburg, pale greenish yellow with red stripes. For canning, sauce, eating fresh.

YELLOW TRANSPARENT, fine early sort good quality, yellow color, white flesh. You should have at least one (5-6 ft. size only.) **ANOKA.** Somewhat later, but one of our heaviest selling varieties, because it comes into bearing before any other variety in the orchard, generally the next year after planting. No other sort does this. In color and size it resembles Duchess very much, although I believe that the flesh is somewhat more firm. You can't go wrong on this one.

Fall and early Winter apples.

WEALTHY. Well-known, leading commercial fall apple. Great bearer, excellent fresh, or for cooking. Ripens in September. Fine grained and juicy.

BEACON. MINN. NO. 423. A new variety finding great favor everywhere, fine quality, good flavor, highly colored. There is a heavy call for this, so it must be good. 50c extra in all sizes.

McINTOSH. One of the best commercial apples, flesh tender, snappy flavor. Ripens in October and keeps for a long time. We do not recommend this variety in plantings in exposed places, as the wind seems to fall more fruit of this variety than others, but in protected spots is alright.

HIBERNAL. Hardest of the Russian sorts. Good quality, yellowish-green color, red blush on sunny side. Flesh, yellowish, juicy, tender. Ripens in September and October.

MINN. NO. 1007. The best we can say of this is to quote Prof. W. H. Alderman: "No. 1007 promises to be the outstanding commercial and home orchard wind apple for the Northwest." Splendid grower, quality exquisite, fruit large, parentage unknown, hangs well. This sort is 50c higher in all sizes than other sorts.

WINTER. HARALSON. Resembles Wealthy in size, quality and color, but keeps much longer. It is fast becoming a leading commercial winter apple, so plant several of these. You will never be sorry.

NORTHWESTERN GREENING. Clear pale yellow or greenish color, vigorous grower, heavy cropper. Flesh tinged with yellow, crisp, firm, mildly sub-acid. Good winter apple.

PERKINS. Hardy sort that rates in color, shape and size with such sorts as Baldwin, Spy, and others. Very good keeper. Large, red, and round as a ball. Fine grained flesh, juicy, fine flavor. A quality sort.

SALOME. Early bearing winter apple, attractive yellow blushed pinkish red color. Hangs well to tree, firm, stands handling, and fairly good keeper to April.

MALINDA. Beautiful apple, one of the hardiest, heaviest bearing, longest keeping sorts. Yellowish-white flesh, firm, juicy, sweet after-taste.

DELICIOUS. Popular quality apple, good size, flesh white and firm, keeps well, and the name describes the quality.

CRAB APPLES. DOLGA. A beauty, dark red all over, is juicy, and the quality itself is distinctly Dolga. Dolga is essentially a very high quality jelly and jam crab, which always jams because of the high pectin content. If you have something that won't jell, use some Dolga. Hardy, vigorous beautiful flowers. Highly recommended in every way.

WHITNEY. One of the leading crabs, Whitney has always stood for quality. Can be eaten from the tree, and is hard to beat for pickling. Large, juicy, yellow color with red stripes. Vigorous and a heavy cropper. You can't go wrong here.

HOPA. See under shrubs. While this is an ornamental, it can be used for fruit, which is quite small. Read the description and decide to get one for ornamental use—you'll be exceedingly proud of it. Everybody asks us what kind of tree it is; so will your neighbors. See also the Flame Crab, under shrubs. It's a must have. For prices on these two varieties, see under description.

SPECIAL APPLE BARGAIN COLLECTION

We have a block of trees of 20 or more varieties where the names were lost. These are all standard, high grade sorts, mostly large apple, with some good crabs also. We will sell this at the same quantity price as our other apples with the extra inducement of \$1.50 worth of any other stock you wish free with each six trees. If you don't mind if you haven't the names of the trees, you are assured they are all good, then here is your chance to get extra stock for your money. On all orders for this mixed collection the \$3.60 per 6 price, \$1.00 worth of extra stock, your selection free.

PLUMS. Everybody will want some good varieties of plums in the orchard. The sorts listed here are among the best. Prices on all sorts unless stated otherwise, are for 4-5ft. trees, as follows: 70c ea., 5-\$3.00, 10-\$6.00, 25-\$14.00. All Minnesota trees, remember.

KAGA. Also called Apricot plum. Eat one fully ripe from the tree, and you will say it is the best flavored plum you ever ate. In our home orchard, we sell the surplus fruit in a surprisingly short time. One of our heaviest sellers. You can't go wrong here. Ripens in August.

WANETA. A dandy, highly recommended sort, large size, fine quality, long keeper, beautiful color, small pit, and a heavy bearer. Don't miss this.

UNDERWOOD. One of the most popular early sorts, hardy, vigorous, a success even in Canada. Early ripening, good quality, recommended as one of the first to ripen in orchard.

OPATA. Considered the earliest of all of the Sand Cherry type. Flesh is green colored, pleasing flavor. Grow this sort in bush form, it will bear heavier and live longer. Ripens in late July, and remains on the tree about two weeks. Opata is also a good pollenizer plum for other sorts, also especially for Tom Thumb Cherry, also for Oka Cherry.

SAPA. Purple fleshed fruit, very heavy bearer, and very popular sort. Include one of these in your order. Sand Cherry type.

SUPERIOR. Here is something exactly what the name implies; superior is the word for quality, a sensation of the plum world. As large as the California plums, and surpasses even in quality. Firm flesh, beautiful color. Peel it as a

peach. Don't forget this one, order at least two, and so early, as there is always a rush for it, everybody wants it.

EMBER. So named because of its glowing color. Yellow flesh, juicy, tender, sweet, pleasant, ripe in mid-September. Absolutely a top-notch. 10c above other plum prices. If other varieties are wanted write us.

COMPASS. Also called a cherry, as it is a plum-cherry hybrid. This is well-known as a heavy bearing tree, although for really good cherries, we heartily and unhesitatingly recommend Tom Thumb and Oka cherries. The Compass cherry should be used as a pollenizer for Tom Thumb and Oka, using one tree to six or eight of either variety.

CHERRIES

Ordinary type cherries are not sufficiently hardy, so the Northern planter is strongly advised to plant the two varieties below. These are not make-shifts, but of high quality, large size and bear the year after planting. These should be grown in bush form, which is really their natural form, this makes greater hardiness, much closer spacing than ordinary cherries. Highly recommended for city lots, where room is often at a premium. Last spring, one lady bought a small plant from us, and found that it borne a small quantity of fruit the first season, and seeing and examining them, she exclaimed, "Why, they're just like the cherries in the stores." Prices 3-4 ft. 65c, 5-\$2.75. 10-\$5.00. 25-\$11.00.

OKA. With a sweet flavor, hard to beat. Outside color black, dark purple flesh, juicy, and a freestone. A dandy canner, but you may not can many, as it is a great fruit to eat right from the tree. If left on the trees, they will dry as prunes. Hardy in Manitoba, Canada, heavy producer of quality fruit anywhere. Doesn't have to take it's hat off for any variety of cherry, regardless. But plant enough of them.

TOM THUMB. Bluish black skin, red juicy fruit on a bush that never gets much higher than 3 or 4 feet. Fine quality, very heavy bearer. Plant a row like currants and have some real fruit in a very short time.

PEARS

ASPA. How many people realize that we can grow real pears in Minnesota. At last, dependable hardy varieties are available. Get one of each of the two sorts described. 4-5 ft. trees, 75c 5-3.25. 10-\$6.00.

PARKER. MINN. NO. 1. Hard to beat. Fruit medium to large, appetizing yellow color with a distinct blush. Tender flesh of fine flavor, small core, and few seeds.

PEARS. This is a variety imported from Sweden and we want everybody to plant this hardy, worthwhile sort, that is becoming better known right along. How about a tree?

RASPBERRIES

LATHAM. The standard main crop sort. Nice No. 1 plants: 6-45c, 12-60c, 50-\$1.60, 100-\$3.00, 500-\$11.60.

CHIEF. Similar to above, except that it is a week or so earlier. High quality. Prices same as for Latham.

GRAPES

BETA. Hardest variety known, absolutely no winter covering needed. Pruned annually, it produces enormous crops, good quality fruit, almost black, juicy. Dandy for wine, and grape juice, more tart than Concord. Excellent for jellies and jams, easier canner than Concord also. We have some nice plants this season, these produced quite a bit of fruit last season, young as they were, each 20c, 5 for 85c, 10 for \$1.10, 25-\$2.25, 50-\$4.25, 100-\$8.00.

CURRENTS

NEW RED LAKE. The currant you have long been wishing for, because the bunches are filled with large berries, juicy, and that make that sparkling red jelly that goes so well. Will positively please! Supply is limited everywhere, so order early. 35c each, 5-\$1.50.

GOOSEBERRY. COMO. New sort from the Minn. University. Vigorous grower, nearly thornless, hardy, and not easily susceptible to gooseberry diseases. Large fruit, but unlike some sorts, the fruit does not turn dark, but remains green, which is a great advantage on the market. Recommended. Same price as Currants.

RHUBARB. New Ruby. Originated at Central Experiment Farm, Ottawa, Canada. Stalks bright red, tender, juicy, mild flavor. Throw the old kind away when you get this going, you'll do so anyway. Highly recommended in every way. Strong divisions 45c, 3 or more 40c each.

STRAWBERRIES. Mastodon Everbearing. \$2.00 per 100. Postpaid.

PREMIER June bearing, one of the best, 90c @ 100, postpaid. If interested in other varieties, write for prices.

VINES

Every home can use a vine or two, some larger grounds.

could use a number of varieties. They help to complete the picture of a well-planted place.

BITTERSWEET. Oriental. Hardy, rapid vine that bears profusely orange-colored berries. Can be pruned and grown as shrub. Recommended. No. 1 plants 35c.

ENGLEMAN IVY. Excellent for stone or brick walls, clings without support, and very hardy. Flowers insignificant, foliage is heavy and pleasing. 35c.

HALL'S HONEYSUCKLE. Hardy, rapid. Blooms nearly all summer, very fragrant pure white and yellow flowers. Stands heat and drought. 30c.

BIGNONIA RADICANS. Trumpet Vine. Very large scarlet trumpet-shaped flowers in late summer, unusually attractive. Vigorous. 30c.

CLEMATIS. Purple, red, pink sorts. Large flowered kinds in four inch pots, the proper way to handle, 75c each.

ROSES

Rugosa varieties as follows: Amelia Graveraux, bright cerise-red.

HANSA, dark red, very popular sort.

AGNES, double yellow.

F. J. GROOTENDORST: Crimson, carnation-like flowers.

THOMAS LIPTON, white.

PERSIAN YELLOW. Not a Rugosa, but very hardy, double yellow, blooms in June only, while the Rugosas bloom more or less nearly all summer, and sometimes in fall.

CLIMBING ROSES. Paul's Scarlet. Brilliant scarlet, very popular.

DOROTHY PERKINS. Shell-pink.

All varieties of roses, strong No. 1 plants 50c, 3-\$1.25.

PEONIES

Three for \$1.00. Six-\$1.75. 8-\$2.00

Favorites with everybody. We list some of the best sorts.

KARL ROSENFELD. One of the best dark reds known. 40c.

EDULIS SUPERBA. Very good pink. 40c.

MONS. JULES ELIE. ..Considered the king of peonies. Immense, very full flowers of a glossy lilac-pink. 40c.

MARIES STUART. ..Beautiful lavender, changes to white 40c

GROVER CLEVELAND. ..Red sort, not so dark as Karl Rosenfeld. 40c.

VIRGIN MARIE. ..Late white with red fleck in center. Very good. 50c.
tion Day 40c.

TENUFOLIA, single. Very early re, often blooms for Decora-

COURONNE D' OR. ..Snow-white with golden stamens in center. Fine. 40c.

PERENNIALS

One should plant at least three of a kind, for show, for cutting, and for protection of the variety, should one die. Prices unless stated otherwise, 15c ea. Dozen \$1.50.

ANCHUSA *triflorata*. 3-5 ft. Intense, brilliant blue flowers, June-July.

ACHILLES *Bou de Neige*. 18-24 in. Small white double flower, excellent for cutting, fine filler. June to September.

ACHILLEA *tomentosum*, 2-3 ft. Yellow, single.

ACHILLEA *millefolium roseum*. Dainty foliage, pink flowers, June-September.

ALYSSUM *saxatile compactum*. Basket of gold. Masses of golden flowers in May. 1 foot.

ARTEMESIA *absinthium*. (Wormwood) 2-3 ft. Masses of gray, silvery foliage for contrast, etc.

CERASTIUM. *Snow-in-Summer*. Low-growing, masses of gray silvery foliage, mat-like, profusion of white star-like flowers, June. For edging, etc.

CHINESE BELLFLOWER. 1 ft. Masses of blue bell-like flowers bore for long period. Nice foliage, very good perennial.

CANTERBURY BELLS. ..Biennial. A favorite with all who have grown this, the bell-shaped flowers are large and borne profusely, especially if given a rich soil, plenty of water. 1½-2 ft.

CANTERBURY BELLS, perennial peached-leaved. 2-3 ft. Stems slender, with blue bell-like flowers, although not so large as the biennial sort, are pretty and in bloom for a long time.

CORAL BELLS. This is a worthwhile flower that should be included in every garden. Pretty foliage, with stems rising 1 ft. above leaves, with fairy-like coral-red bells. Be sure to include this, 20c ea. 3-55c.

DELPHINUM. Blackmore & Langdon strain. Coming in various shades of blue, the delphinium or perennial larkspur is one of our best garden flowers. 3-5 ft. July.

HIBISCUS. Marvel Mallow. Enormous single flowers, in white, red, pink colors, are borne in August-September, on 3-5 ft. plants that have a heavy shrub-like appearance. Give rich soil, and a sunny spot, and you will surprise yourself.

HEN & CHICKENS. Echeveria. Large rosettes of fleshy light green leaves, each tipped with red. Little plants start around the mother plant. Attractive and pretty.

GAILLARDIA. 2-3 ft. Very useful border plant, blooms from June to frost. Yellow and orange color, dependable perennial. Good for cutting. Drought resistant.

HOLLYHOCKS This old-fashioned plant is hard to beat in its place. Furnished single, mixed, or in double red, yellow and pink.

HEMEROCALLIS. Day Lily. Fulva. The old-fashioned kind, orange flowers, 3-5 ft. DR. REGAL, 2 ft. Ppretty yellow sort, given prize medal by English Horticultural Society. KWANSO, 3 ft. Double orange golden, fine sort. Any of these make a stately showing in the garden or border. Delight in partial shade. June-July.

ASTILBE. Peach Blow. 1½ ft. Fine new sort, bears fluffy heads in pink plumes composed of fine flowerets, delight in rich soil, fair supply of moisture, and some covering over in winter. July-August.

FUNKIA lancifolia. Plantain Lily. Fine plant with large overlapping leaves, attractive trumpet-like flowers. Fine for shade or sun. Pale blue. July-August.

SEDUM. Stonecrop *Stoloniferum*. Fine, low-growing rock plant, 4-6 in. Splendid foliage.

NEPETA. mussini. Another standard rock plant. 8-12 in. Resembles Catnip. Finer foliage, blue flowers. Good.

SEDUM spectabile. Showy Sedum. Heavy green foliage, 18 in. Reddish flowers in August-September.

PERENNIAL SWEET PEAS. A dandy vine that will give more and more satisfaction as time goes on, once it is planted. Much similar to annual sweet peas, except that flowers are not fragrant. Very hardy. Blooms nearly all summer.

PHLOX sublate. Creeping phlox. Old favorite with many. Masses of flowers in spring. Two sorts: Blue Hills,, fine blue, atropurpurea, reddish pink.

PHLOX, .regular. One of the best perennials. Rhineland, salmon-pink, B. Compté, satiny amaranth red, Widor violet blue, white eye.

CHINESE LANTERN PLANT. .2-2½ ft. Grown for its large "lanterns" which are dried for winter decoratives.

SHASTA DAISY. Very attractive flowers, for the border, or for cutting. White with yellow eye, a favorite. 1½-2 ft.

ASTER, .Queen Mary. Fine perennial fall aster, single, rich blue flowers, very effective in masses. 3-4 ft. Don't miss it.

ORIENTAL POPPY. .Hard to beat the poppy for a more gorgeous display. Very large cup-shaped blooms, crimson-scarlet, June-July. 2-3 ft. Plant very early.

OLYMPIA. Double oriental poppy that is very fine. Salmon.

LYCHNIS— .Jerusalem Cross. Showy, with bright scarlet cross-like flowers. Old-fashioned flower. 2-3 ft. June-Aug.

LILIES. .Regal. One of the most beautiful, comes from China. White, with yellow throat, resembles Easter Lilies. Plant 7-8 inches deep. 25c each. 3-60c.

TENUFOLIUM. Coral Lily. Beautiful slender growing, not over 18 inches high, bright scarlet flowers with recurved petals. Plant 3-4 inches. 20c. 3-45c.

UMBELLATUM. Also called Seven Sisters. Seven blooms to a stem, bright orange red. 20c. 3-50c.

TIGER. Single. Fine, old fashioned lily, splendid if given background of shrubbery, etc. Orange-red, spotted black. Plant 5-6 in. 20c. 3-50c.

BABYS BREATH. Single, popular for filler in bouquets.

BRISTOL FAIRY. The double babys breath all want. 50c.

IRISES. We have a great many varieties in all sorts of all. If special list is wanted, write for it. Otherwise we can furnish any color wanted in a named variety at same prices as other perennials. Special offer. 20 sorts prepaid \$1.75. Plant very early in spring.

YUCCA. Adam's Needle. Handsome, tropical looking, long narrow leaves, green all year around, 4-5 ft. spikes with creamy-white flowers in July. Heavy plants, 30c-50c.

HAECKER'S VARIEGATED YUCCA. Has a golden stripe along edge of leaves. Pretty. 50c.

VERONICA. Speedwell. Variety amethystina. Blue spikes on 1 ft. plants in June-July. For rockeries, etc.

BLEEDING HEART. Old fashioned favorite. Strong plant 50c

PAINTED DAISY. Beautiful perennial, mixed colors, white, red, pink, etc. Come mixed only.

PERENNIAL FLAX. Fine beautiful plant, intense blue flowers. June-September. 2 ft.

EVERGREENS

NORWAY SPRUCE. The most rapid growing spruces. 10-12 inch transplants 35c each, 10-\$3.00, 100-\$12.00.

12-18 inch	each	50c	10-\$4.00	100-\$15.00
18-24 inch	each	75c	10-\$6.00	100-\$40.00
2-3 ft.	each	\$1.00	10-\$8.00	100-\$65.00
3-4 ft.	each	\$1.50	10-12.00	
4-5 ft.	each	\$2.00	10-18.00	
5-6 ft.	each	\$3.50	10-30.00	

Have a large number that we call windbreak grade in various sizes, at a low price. If interested, write.

COLORADO SPRUCE. The best, hardiest spruce.

Blue or Shiners, 8-12 in. 75c each, 10-\$7.00.

12-18 in. ea. \$1.00 10-\$ 9.25

18-24 in. ea. \$2.50 10-\$22.00

24-36 in. ea. \$3.50 10-\$32.00

Seedlings 2/5 in. \$5.00 per 100

Medium blues at 25c less in 8-12 in. & 12-18 in. sizes 50c less on large sizes. Greens, 8-12 in 25c, 12-18 in. 50c ea. Others 75c ea. less. Also a lot of 450 heavy 12-18 inch, green trees, especially offered for windbreaks 50c, 100-\$35.00, 50 at 100 rate

SCOTCH PINE. Our fastest growing tree in evergreens.

18-24 in. 75c, 24-36 in \$1.50, 3-4 ft. \$2.50, 4-5 ft. \$3.50.

225 trees 2-3 ft. for windbreak planting, \$30.00 per 100. 50 at 100 rate.

AMERICAN ARBORVITAE. White Cedar. Makes fine hedges. 18-24 in. 50c, 10-\$4.00, 100-\$35.00, 24-30 in. 75c, 10-\$6.50, 100-\$55.00, 50 at 100 rate. All transplants.

HEDGING

CARAGANA. Very good. Transplants 2-3 ft. \$15.00 per 100. See also under windbreak for Caragana seedlings.

MORROWII HONEYSUCKLE. Hard to beat. 2-3 ft. \$20.00 per 100.

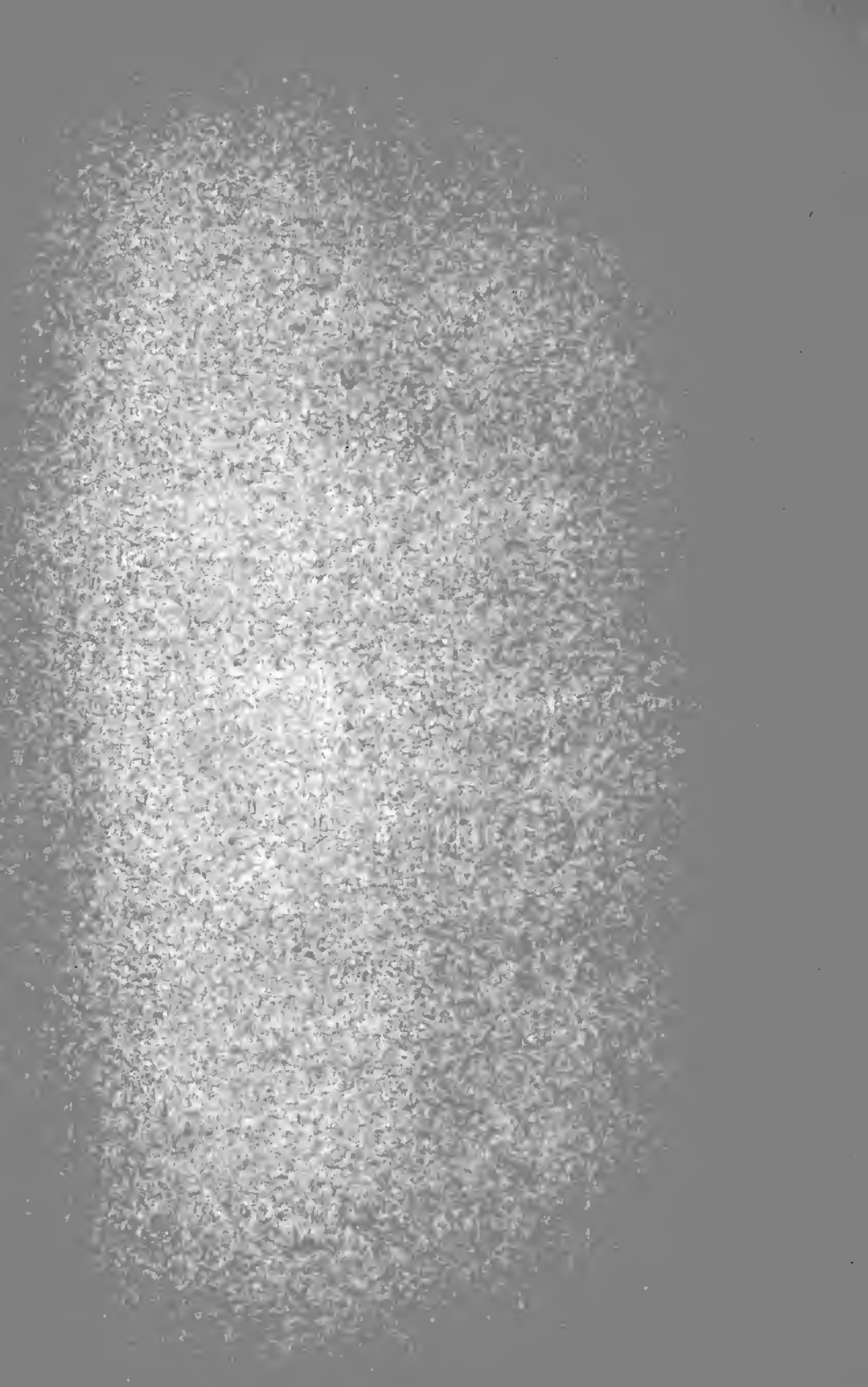
BUCKTHORN. 18-24 in \$8.25. 24-36 in. \$18.00 per 100. Also see Arborvitae under evergreens.

WINDBREAK TREES

Plan to plant some windbreak trees this season. We are listing the best and the hardiest.

ASH GREEN. Fast growing hardwood tree, drought resistant and recommended in every way. One-third of windbreaks ought to be Green Ash. Seedlings priced as follows:

Size	100	500	1000
6-12 in.	.60	\$3.00	\$5.00
12-18 in.	\$1.00	\$4.50	\$7.00
18-24 in.	\$1.25	\$6.00	\$8.00
2-3 ft.	\$2.50	\$10.00	\$16.00
3-4 ft.	\$3.75	\$16.00	\$28.00
4-5 ft.	\$5.00	\$23.00	\$40.00



CARAGANA. Siberian Pea Tree 10-12 ft. Excellent for windbreaks or hedges, stands shearing well. Good snow-catch outside of windbreaks. Hardy, drought resistant, much planted on western plains.

12-18 in.	\$1.50	\$5.00	\$9.00
18-24 in.	\$1.75	\$7.50	\$13.00
24-36 in.	\$3.25	\$13.50	\$26.00

AMERICAN ELM. Is being planted more and more. Always recommended for windbreaks. Rapid grower.

18-24 in.	\$1.50	\$4.75	\$8.75
2-3 ft.	\$2.50	\$10.50	\$20.00

CHINESE ELM. Also makes good hedges and can be sheared.

18-24 in.	\$2.25	\$8.75	\$13.25
24-36 in.	\$3.00	\$12.50	\$21.00
3.4 ft.	\$4.25	\$19.50	\$35.00

Honey Locust, seedlings, thornless. This is a rapid, hardy tree, highly recommended. Fern-like foliage, fragrant flowers bean-like pods. Ornamental and very useful, too. 18-24 in. 10-50c, 100-\$2.00.

RUSSIAN GOLDEN WILLOW. A good tree. 3-4 ft. \$4.50 per 100. 500-\$20.00.

CAROLINA POPLAR cuttings, 50c-100, \$3.75 per 1000.

NUT TREES. Plant some of these also. Butternut and Black Walnut 18-24 in. 10c ea. 100-\$4.50.

WHITE BIRCH seedlings. Include a few of these this year. Pretty trees to have around the place. 18-24 in. 15c ea. 10-\$1.00, 50-\$4.00.

SILVER MAPLE seedlings. 18-24 inches 15c ea. 10-\$1.00. Prices on other seedlings upon application.

WHAT OUR FRIENDS SAY.

Cheyenne, Wyoming, Oct. 5, 1937

Dear Mr. Wiener:

Received the common Sumac, also the Siberian Pea tree last week. My husband and I were more than pleased with the sumac and the Siberian Pea trees, the shrubbery was just fine.

Thanks a lot for the fine shrubbery you sent. We hope to get a large order from you in the spring, for we are surely pleased how you filled our order.

Mr. and Mrs. Charles Gape.

Stillwater, Minn., June 7, 1937

Dear Mr. Wiener:

Those Blue Spruce we got from you, it looks like we are not going to lose a single one. You must have handled them just so on your end and we did the same here when they arrived and it is gratifying to have such good results. If you have any more to spare next year, we surely want to get some more.

Yours truly,
F. L. Seifert.

OUR GUARANTEE

All stock true to name and correctly labelled. Packed right. Certificate of inspection accompanies all shipments. All stock guaranteed to be in live, growing condition on arrival at buyer's station. As we have no control over the manner the nursery stock is planted and cared for after out of our hands, our responsibility ceases with the buyer's acceptance. Any claim must be made immediately after arrival and unpacking of stock. In no case, will be liable for more than the purchase price. We exercise the best of care that satisfactory stock is shipped out.

WIENER NURSERY
